



MORRISON ELEMENTARY

Established: 1975
Square Footage: 63,867
Cafeteria: 3,367 S.F.
Classrooms: 30
Classrooms that meet state standards: 30
411 Students
Classroom Utilization: 90%



MEDIA CENTER

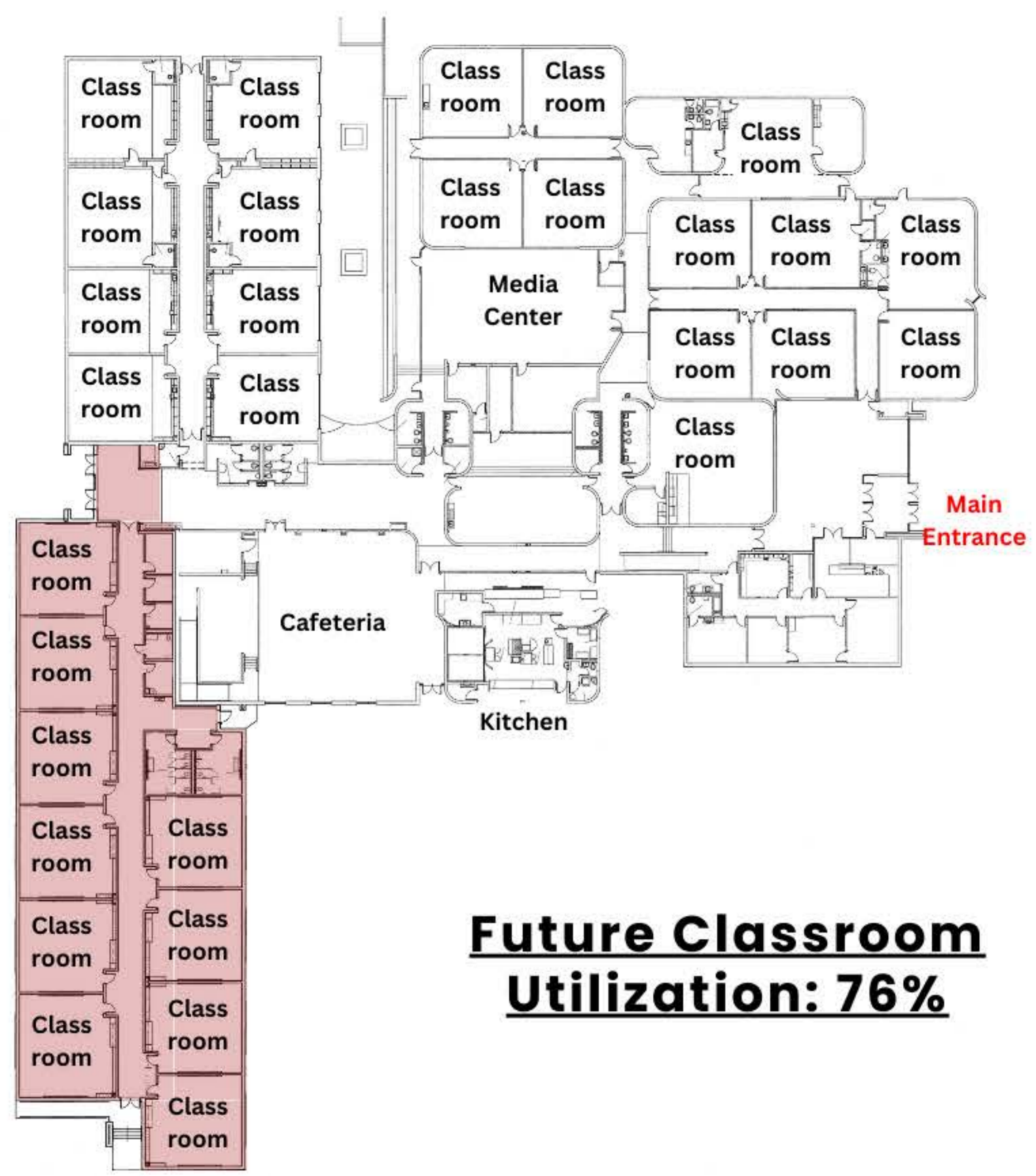


DINING AREA



SECURE VESTIBULE

FLOOR PLANS



Future Classroom Utilization: 76%

*Area highlighted is currently under construction.

GUIDING PRINCIPLES



Renew & Revitalize



Ensure Safety



Relevance & Efficiency



TRUSTY ELEMENTARY

Established: 1928
Square Footage: 35,866
Cafeteria: 1,862 S.F.
Classrooms: 12
Classrooms that meet
state standards: 1
121 Students
Classroom Utilization: 42%



MEDIA CENTER

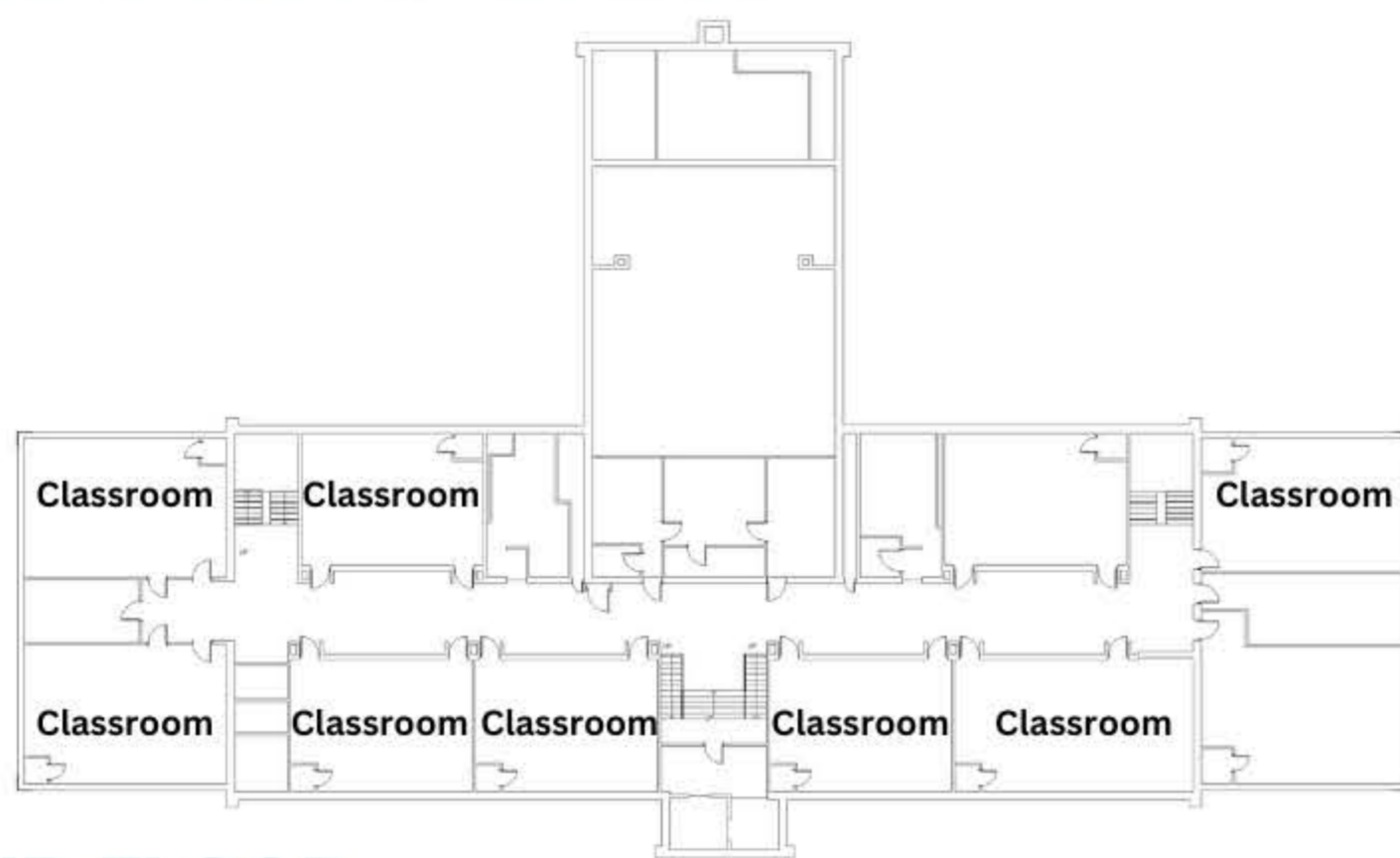


DINING AREA

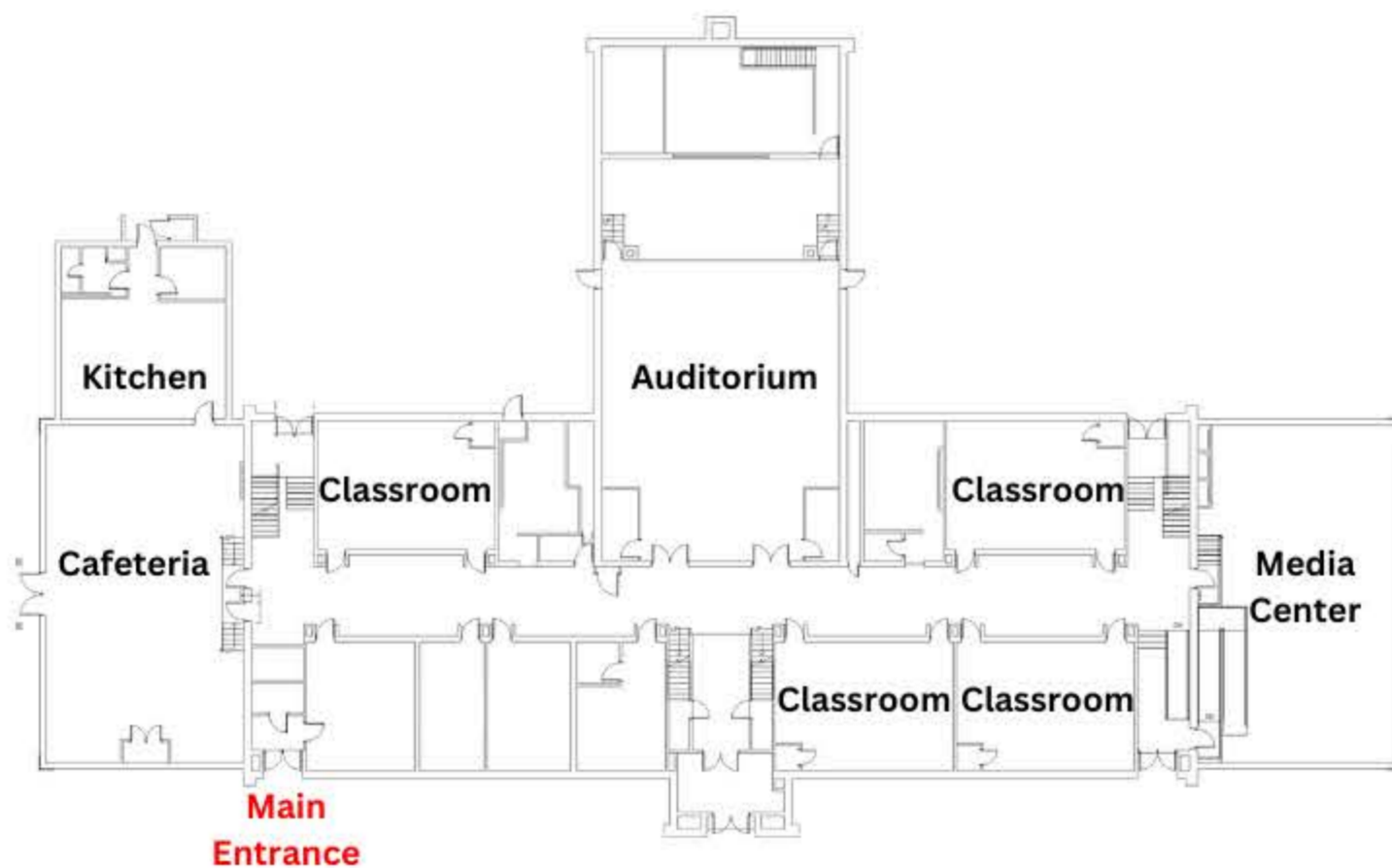


SECURE VESTIBULE

FLOOR PLANS



2ND FLOOR



1ST FLOOR

GUIDING PRINCIPLES



Renew & Revitalize



Ensure Safety



Relevance & Efficiency